

NORWEGIAN WOOD DESIGN

Product description of Brygga wash stand

Content

Dimensions.....	2
Materials	9
Weight.....	9
Models	9
Installation	10

Dimensions

The “Brygga” wash stand fits all our standard sinks, and are available in 3 standard dimensions:

The outside measurements for the Brygga 600 is 600 x 380mm.

The outside measurements for the Brygga 800 is 800 x 480mm.

The outside measurements for the Brygga 1200 is 1200 x 480mm.

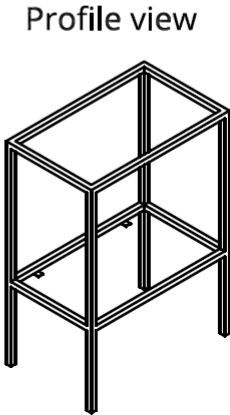
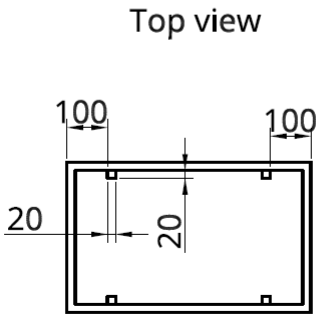
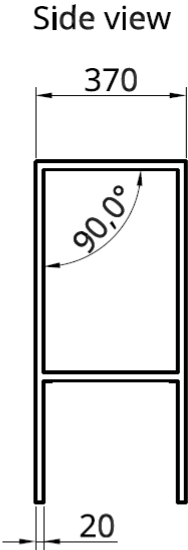
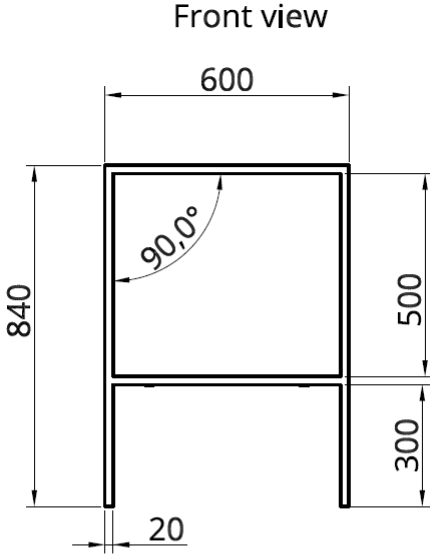
The Brygga wash stands for Hardangervidda countertop has the height of 840 mm. The total height of the wash stand with Hardangervidda countertop is 860 mm.

The brygga wash stand for topmounted sinks has the height of 780 mm. If use of our countertop for the wash stand, the total height will be 800 mm. The topmounted sink will add the height as for the sink height.

All the wash stands includes adjustable legknobs for water levelling.

Brygga 600

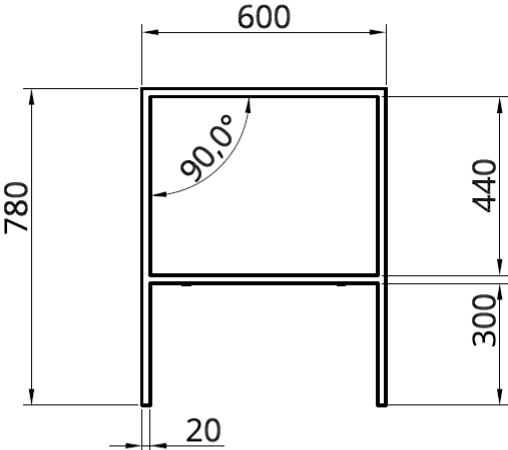
Stand for Hardangervidda countertop



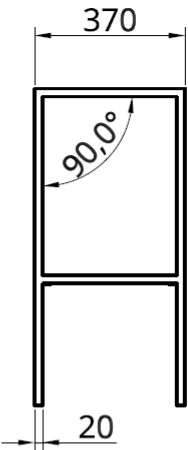
Brygga 600

Stand for topmounted sink

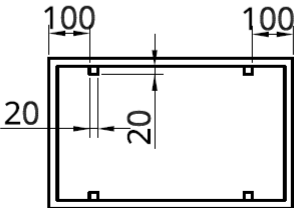
Front view



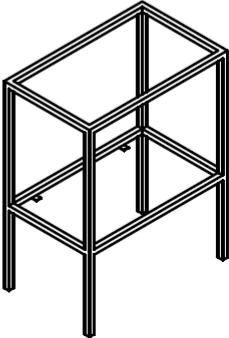
Side view



Top view



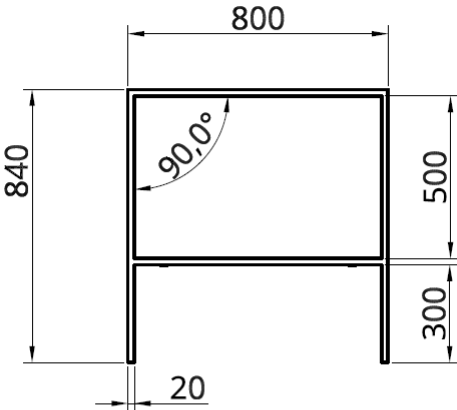
Profile view



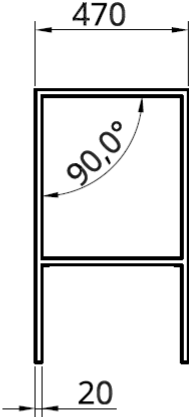
Brygga 800

Stand for Hardangervidda countertop

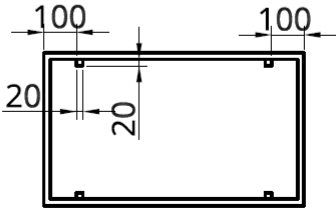
Front view



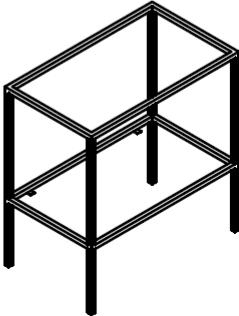
Side view



Top view



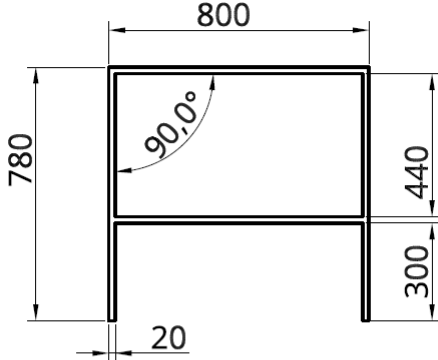
Profile view



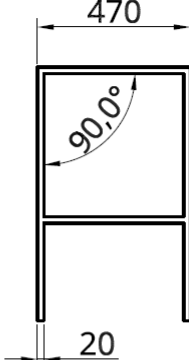
Brygga 800

Stand for topmounted sink

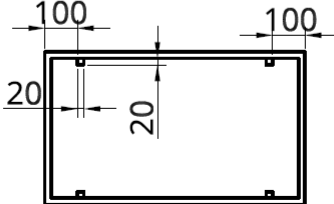
Front view



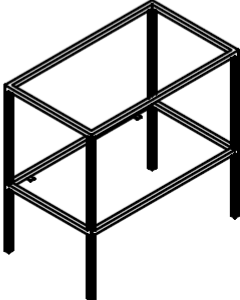
Side view



Top view



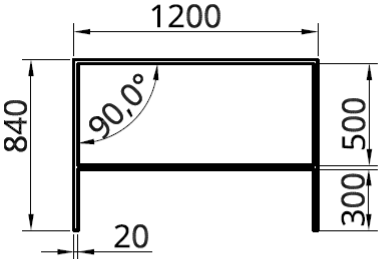
Profile view



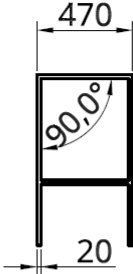
Brygga 1200

Stand for Hardangervidda countertop

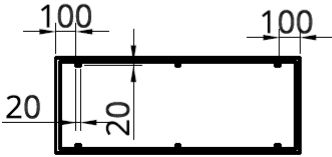
Front view



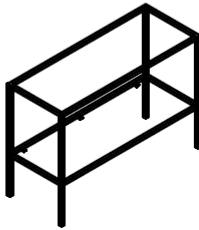
Side view



Top view



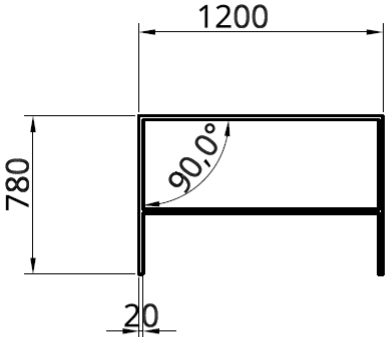
Profile view



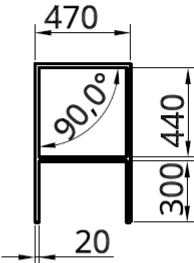
Brygga 1200

Stand for topmounted sink

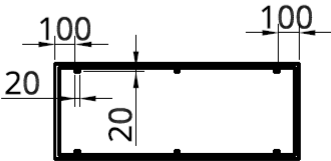
Front view



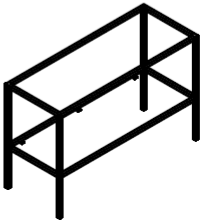
Side view



Top view



Profile view



Materials

Selection of wood for the midcounter and the topcounter is chosen by the customer. The wood type will therefore vary from product to product. Our standard wood species are Birch, Oak, Ash and Or from Norwegian forest. Dark Ash is heat-treated before it is dried and planed for production. Before processing the wood, it get dried to below 7% moisture to avoid cracks in the wood during machining and use.

The counterplates are treated with clear hard wax to resist humidity and water splash. It leaves a simple surface for cleaning and maintenance, but need to be rapped every second year depending on use.

The stands are made of black steel covered by matt black powder lacquer for protection of humidity or stainless steel depending on customer desire.

Weight

Due to different size and weight of the steel, the weight will vary between 4 kg and 12 kg.

Models

The basin can be ordered in types as described above.

Other measures is available on request.

Installation

The Brygga wash stand are fixed before delivery. The water levelling of the wash stand are done by turning the screw knob left or right.

The counter top need to be glued to the stand by Tech7 glue or similar water resistant glue.